



TSL1280-SERIES-A



Applications

- Noise suppression for motors : windshield wipers / power seats / power mirrors / heating and ventilation blower / HID lighting
- Engine and transmission control units
- DC/DC converters for entertainment/navigation systems
- LED drivers
- Battery power systems

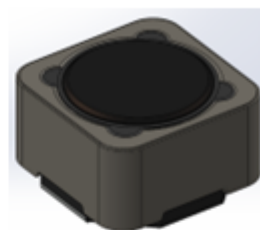
Environmental data

- Operating temperature range : -50°C ~ +165°C(component)
- Storage conditions (packaged) : -25°C ~ +40°C, ≤75% RH
- Complies with AEC-Q200 standard

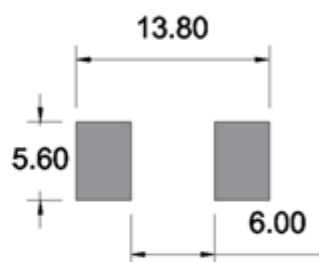
Dimensions [Unit : mm]



Picture



Land Pattern [Unit : mm]



Specifications

Part No.	L0 Inductance (uH) 100kHz, 1V, 0A	DCR (mΩ)		Saturation Current DC(A) 25 °C a)	Saturation Current DC(A) 125 °C b)	Heating Rating Current DC(A) c)
		TYP.	MAX.	TYP.	TYP.	TYP.
TSL1280-3R3M-A	3.3	8.5	10.4	18.7	16	8.5
TSL1280-4R7M-A	4.7	9.5	11.4	16.5	14.5	8.1
TSL1280-6R8M-A	6.8	15	18	13.3	12.3	6.5
TSL1280-100M-A	10	17.5	21	11.2	10.3	6
TSL1280-150M-A	15	26.5	32	9	8	4.8
TSL1280-220M-A	22	47	56.4	7.6	6.9	3.9
TSL1280-330M-A	33	60	72	6.2	5.6	3.2
TSL1280-470M-A	47	85	102	5.1	4.5	2.6
TSL1280-680M-A	68	115	138	4	3.5	2.3
TSL1280-101M-A	100	150	180	3.5	3	1.9
TSL1280-151M-A	150	255	306	2.9	2.35	1.55
TSL1280-221M-A	220	380	456	2.4	2	1.45
TSL1280-331M-A	330	592	710	2	1.6	1.2
TSL1280-471M-A	470	855	1,026	1.8	1.4	1
TSL1280-681M-A	680	1,020	1,124	1.4	1.15	0.74

Notes

* All test data is referenced to 25 °C ambient

- a) DC current (A) that will cause L0 to drop approximately 30 %
- b) DC current (A) that will cause L0 to drop approximately 40 %
- c) DC current (A) that will cause an approximate ΔT of 40 °C

Packing Q'ty (PCS)

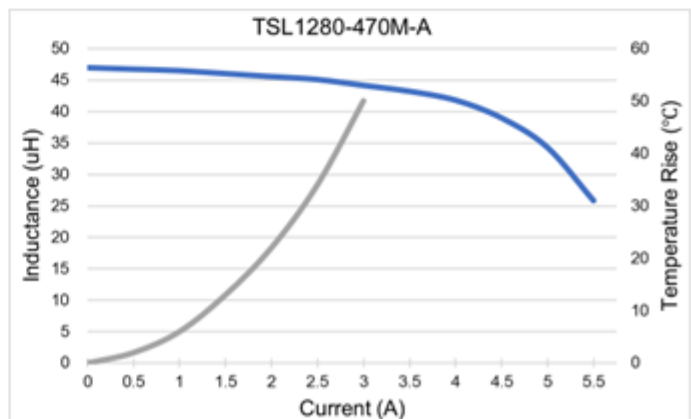
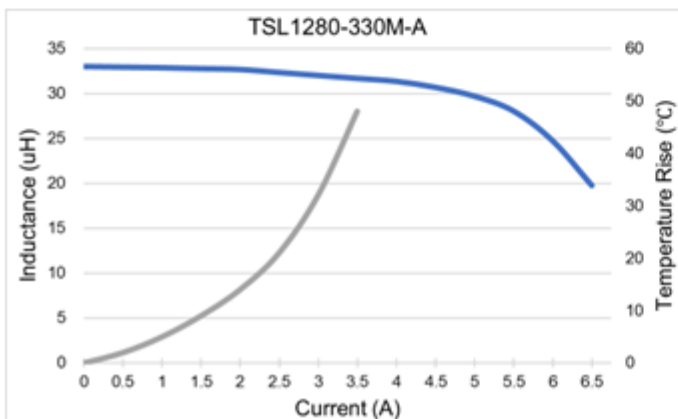
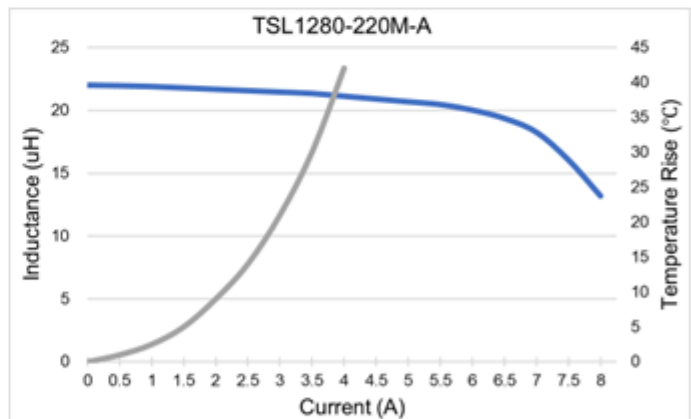
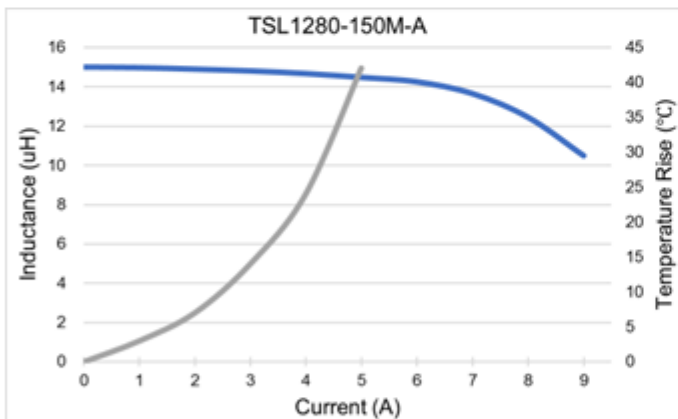
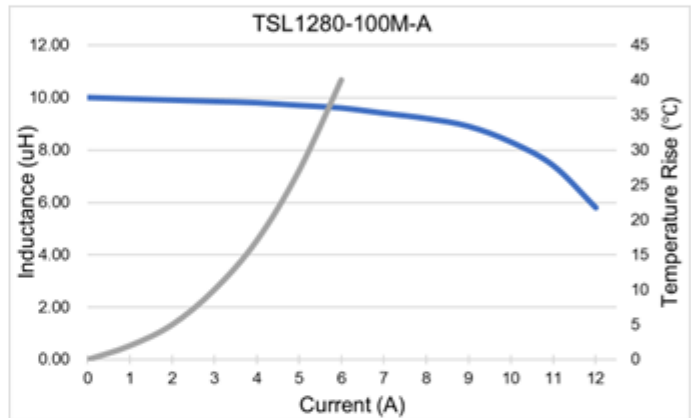
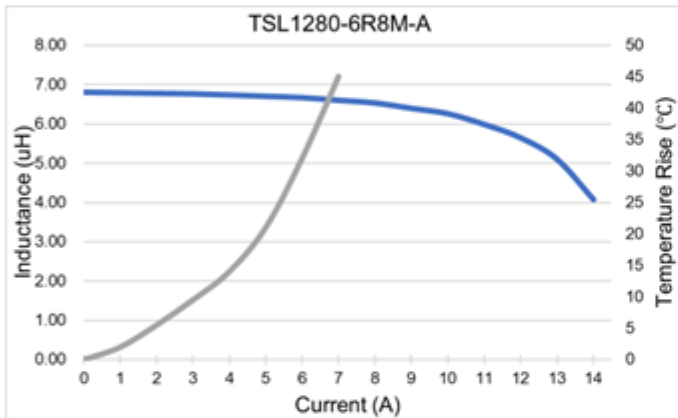
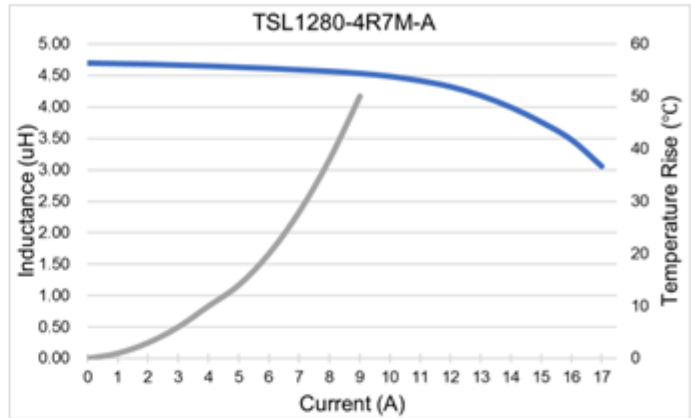
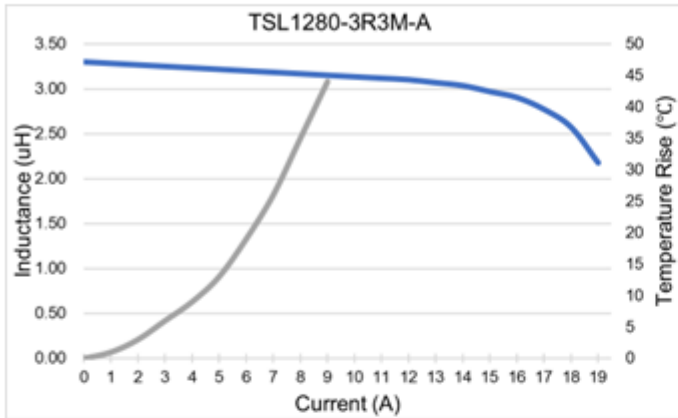
- * Reel : 500
- * Box : 2,000



TSL1280-SERIES-A

Performance Graph

— Inductance (uH)
— Temperature Rise (°C)





TSL1280-SERIES-A

Performance Graph

— Inductance (uH)
— Temperature Rise (°C)

